



Location:

4301 N Sara Rd, Yukon, OK 73099

Property Highlights:

- Suites size range: 1,258SF - 3,902SF
- Built in 2018
- Ample parking
- Great visibility on Route 66 & Sara Rd.
- Close proximity to John Kilpatrick Turnpike
- Surrounded by strong household incomes

Price: Lease

\$20 - \$22 SF + NNN

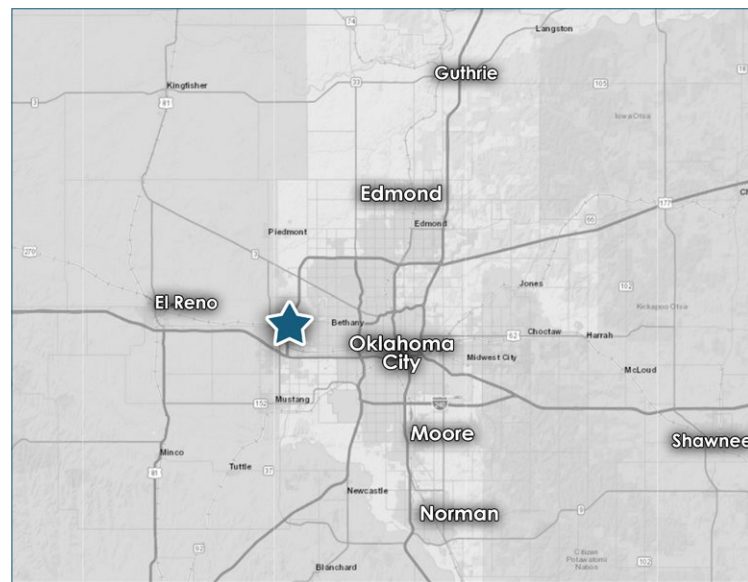
Traffic Counts:

Route 66: 19,000 VPD ('22)

Sara Rd: 6,100 VPD ('22)

Demographics:

	1 Mile	3 Miles	5 Miles
2023 Population	8,923	40,664	131,393
Daytime Population	5,259	28,604	108,629
Avg. HH Income	\$103,780	\$92,679	\$88,496



For More Information:

Jake Hinckley | (405) 657-0096 | jake.hinckley@plainscre.com

PLAINS

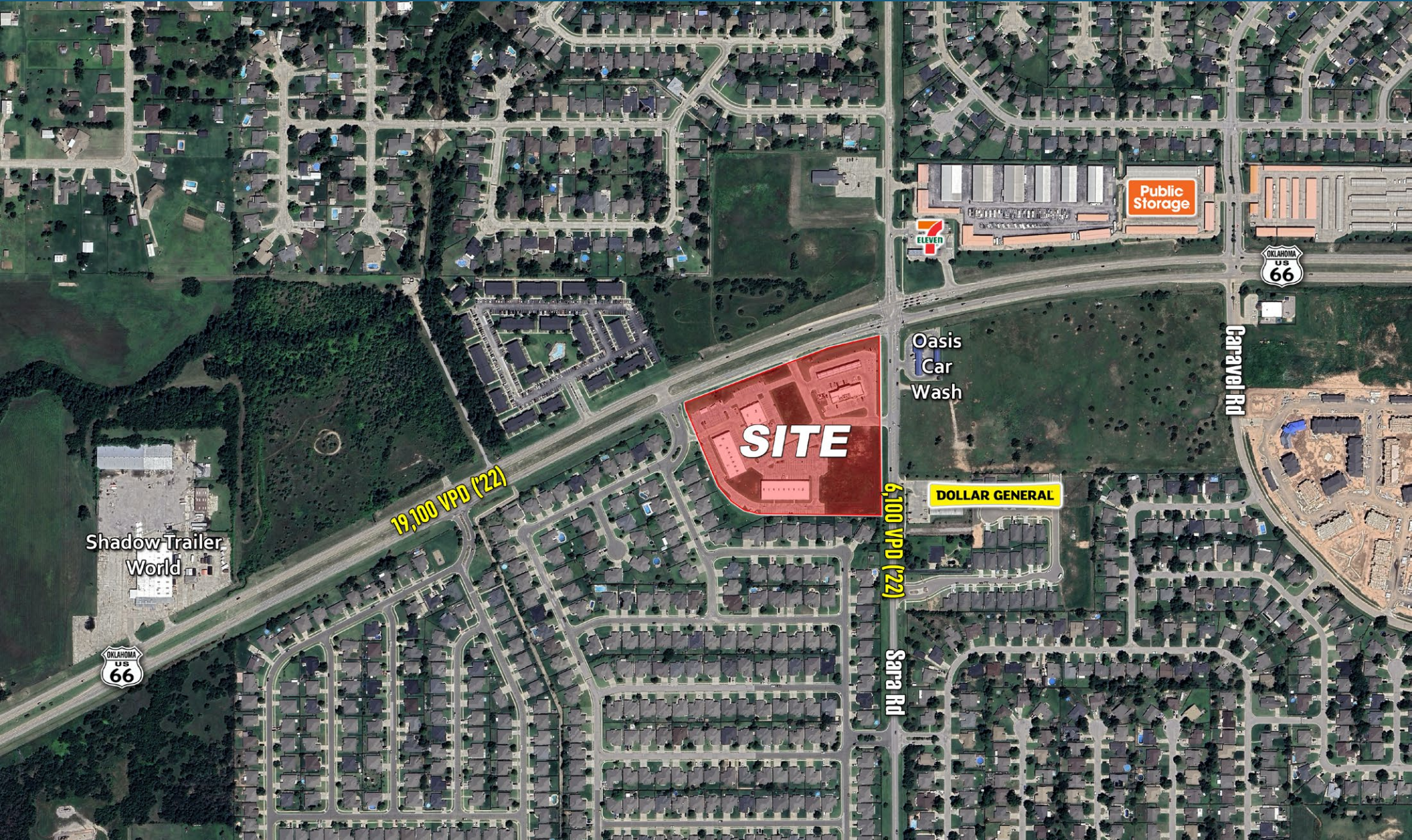
Commercial Real Estate

FOR SALE OR LEASE |
4301 N Sara Rd, Yukon, OK 73099



Jake Hinckley | (405) 657-0096
jake.hinckley@plainscre.com

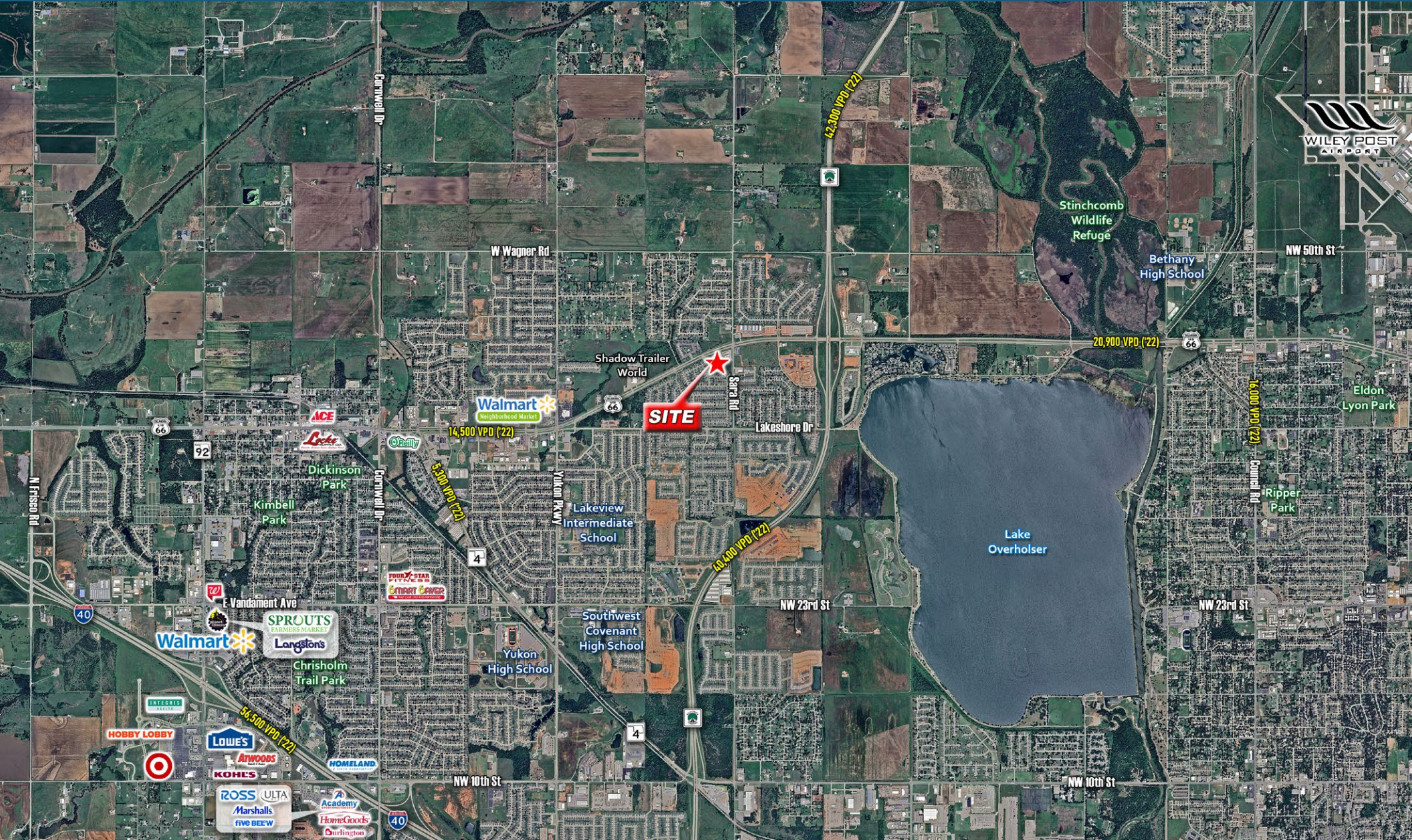
The information contained herein is deemed reliable; however, no warranties, guarantees or representations are made as to the accuracy thereof. The presentation of this information is submitted subject to change in conditions, price, corrections, errors, omissions, and/or withdrawal without notice.



PLAINS

Commercial Real Estate

FOR SALE OR LEASE |
4301 N Sara Rd, Yukon, OK 73099



Jake Hinckley | (405) 657-0096
jake.hinckley@plainscre.com

The information contained herein is deemed reliable; however, no warranties, guarantees or representations are made as to the accuracy thereof. The presentation of this information is submitted subject to change in conditions, price, corrections, errors, omissions, and/or withdrawal without notice.