



4101 NW 122nd St. Okc, OK 73120

Property Highlights:

Size: 12,802 SF

- Easy access to I-44, Lake Hefner Parkway & Kilpatrick Turnpike
- 55 Parking Spots
- Lots of shopping & dining within 5 miles
- Easily accessible from Yukon & NW OKC

For Sale

\$1.7M

Traffic Counts:

NW 122nd St: 20,700 VPD ('22)

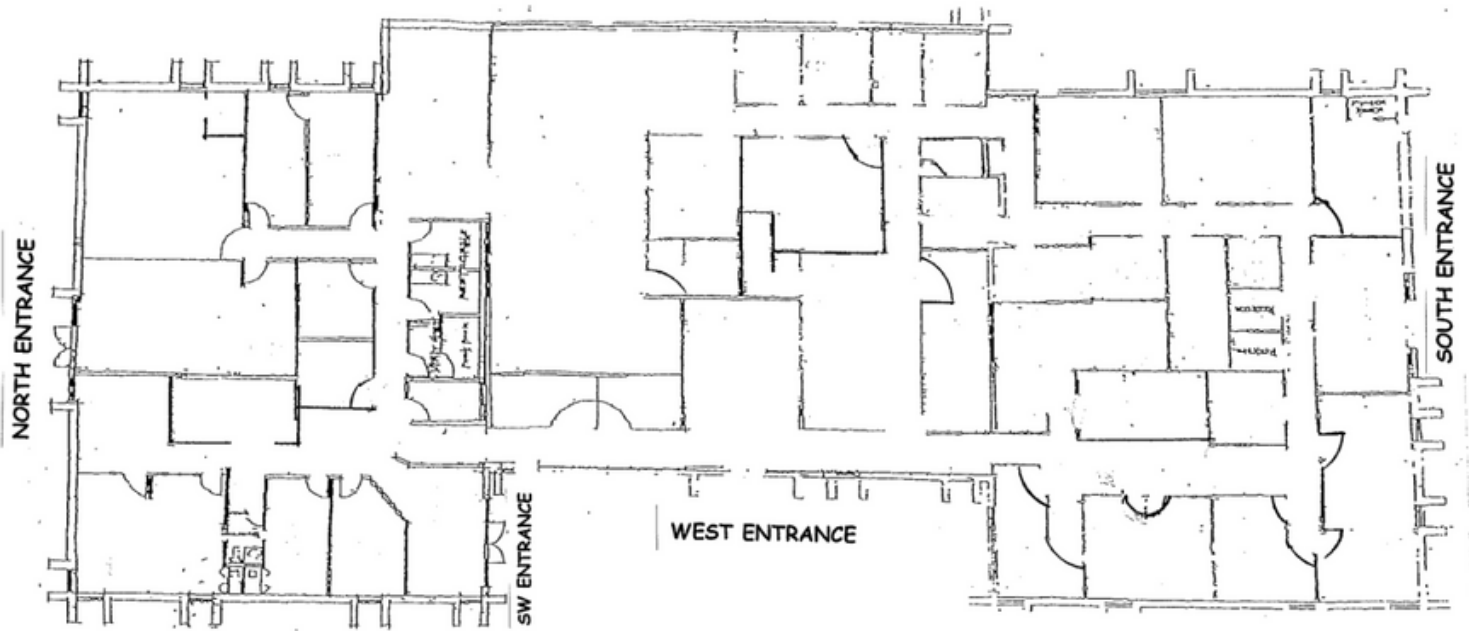
OK-74: 128,800 VPD ('22)

Demographics:

	1 Mile	3 Miles	5 Miles
2023 Population	6,084	68,185	202,360
Daytime Population	10,433	75,680	206,117
Avg. HH Income	\$115,935	\$100,137	\$102,177



Floor Plan



4101 NW 122nd Street
13,000 rsf